

Storage tanks for solar domestic hot water and space heating

We sell different kinds of storage tanks.

Buffer tank, Solar buffer tank, GAMMA combi tank, LOGIX24 combi tank and fibre glass tanks for bigger solutions.

The standard size is 1000 liter.

The steel tanks have 1 ½" female tappings.

Normally they are used with a black iron bushing 1 ½" male to 1" female or a black iron bushing 1 ½" male to ¾" female

The female thread from the bushing can be connected directly to a copper male adapter.

To seal the 1 ½" thread use pink teflon band (min. 6 turns) and Leak Lock.

The steel tanks have a special 4" insulation with a coat and a zipper.

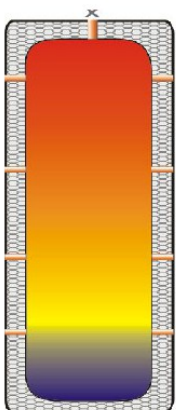
The Buffer Tanks

The buffer tank is used just for space heating.

By installing a separat loop with a double plate heat exchanger and circulator it can be also used for domestic hot water. This requires additional material and labor.

The buffer tank has eight tappings 1 ½" female.

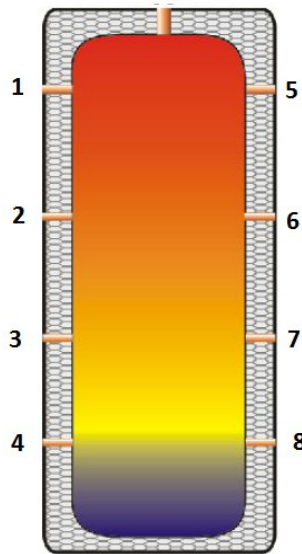
Technical Data LOGIX24 buffer tank:



Logix24 buffer tank	600	1000	1300
capacity (liter)	600	950	1290
width without insulation (mm)	700	790	950
width with insulation (mm)	900	990	1150
height without insulation (mm)	1619	2016	1992
height with insulation (mm)	1700	2100	2072
tilt height (mm)	1670	2090	2090
weight (kg)	80	130	150

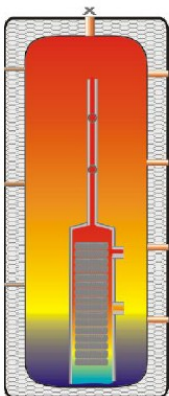
Possible connections **BUFFER** tank

- 1 / 5 supply biomass (wood) / oil / gas
- 1 / 5 supply heating circuit (baseboard radiators)
- 2 / 6 supply heating circuit (in-floor)
- 4 / 8 return biomass (wood)
- 3 / 7 return oil / gas
- 4 / 8 return heating circuit



Technical data LOGIX24 SOLAR BUFFER tank

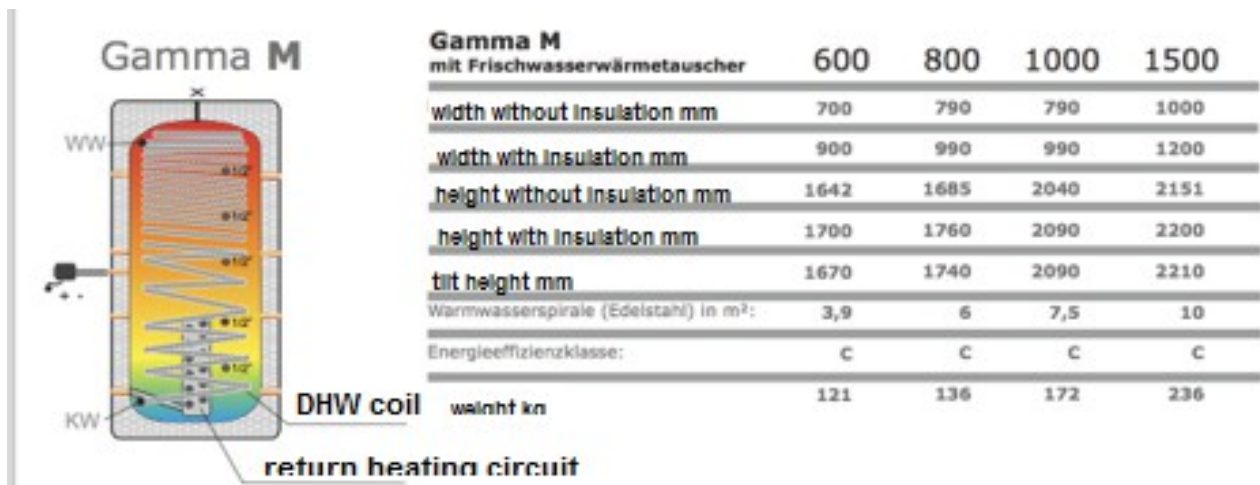
Logix24 PUFFER SOLAR



Logix24 PUFFER SOLAR	600	1000	1300
capacity (liter)	600	950	1290
width without insulation (mm)	700	790	950
width with insulation (mm)	900	990	1150
height without insulation (mm)	1619	2016	1992
height with insulation (mm)	1700	2100	2072
tilt height (mm)	1670	2090	2090
weight (kg)	110	160	180

The Solar Buffer Tank has the same connections like the buffer tank and an additional coil for a solar thermal system.

Technical data GAMMA combi tank

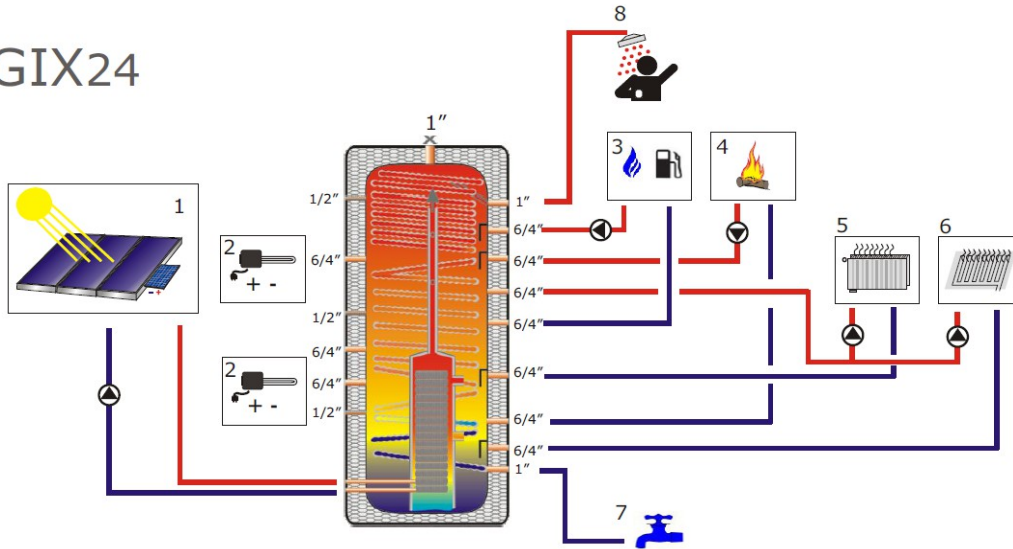


The GAMMA combi tank has the same connections like the buffer tank plus an additional coil (corrugated stainless steel pipe) for domestic hot water and one separat tapping for an electric heating element.

It has additionally a special pipe for the return water of a heating system.

The LOGIX24 Combi Tank

LOGIX24



1 – solar system / 2 – electric heat element / 3 – oil or gas boiler / 4 – Walltherm or biomass
 5 – radiators / 6 – in-floor heating / 7 – cold water in / 8 – domestic hot water out

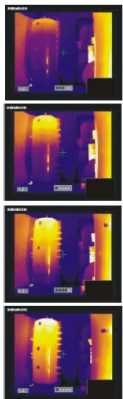
These tanks can be connected to different heating sources.
 Connections for an oil and gas boiler, electric heater and wood stove/boiler
 and for radiant in floor heating or radiators are available.

The combination wood and solar could be the main heating system.
 Backup could be electric, oil or gas or co-generation.

Hygienic domestic hot water is generated by using a corrugated stainless steel pipe.

Technical Data LOGIX24 combi tank:

Stratified charge



Logix24	600	1000	1300
capacity liter	600	950	1290
width without insulation (mm)	700	790	950
width with insulation (mm)	900	990	1150
height without insulation (mm)	1619	2016	1992
height with insulation (mm)	1700	2100	2072
tilt height (mm)	1670	2090	2090
weight (kg)	140	190	210
rate of flow (liter)	410	780	1050

storage temperature 60°C / heating temperature min 40°C

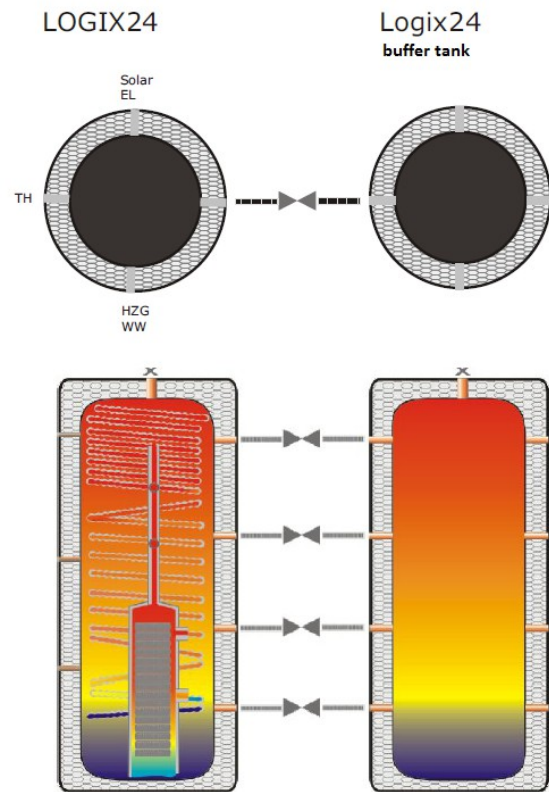
storage material S235JR
 corrugated pipe stainless steel 316L
 operating pressure 6 bar / 87 psi
 insulation 100 mm soft foam
 guarantee 5 years

Connection Set LOGIX24 - LOGIX24 buffer tank

1 Stk. Schieber 1 1/2" AG
1 Stk. Wellrohr 20 - 40 cm



Info: 4 pieces for optimal stratification



Our tanks can be combined with other tanks to extend the water capacity.

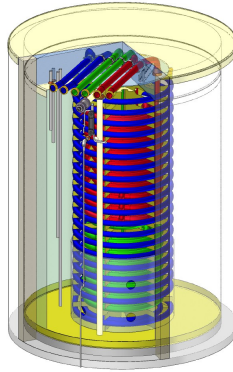
You can put the same tank together or

you can also combine a LOGIX24 combi tank with a buffer tank.

We use special connectors with flanges, shut-off and a flexible corrugated stainless steel pipe.

These tanks work with stratification of the water.
(very simple hot water up, cold water down)

Big storage tanks for solar domestic hot water and space heating



The time-related fluctuation between supply and demand of energies needs to be evened out/equalized by the use of (Energy) storage tanks. The bigger the tanks, the larger the capacity to store regenerative energies and therefore conserving on conventional energy sources.

The storage tank is an important component in the heat supply for buildings in heating of hot water and/or heating support.

The fibre-glass reinforced plastic (GRP) tank wall is prefabricated and delivered in individual parts. The assembly and lamination of the individual parts take place by authorized partners on the exciting location or building site.

Small transportation dimensions (+/- 27"/68 cm broad) help setting up of the storage tank in normal accessible areas. Various tank diameter and height options allow for optimum usage of available space.

Energy input and delivery of energy takes are transfered with high-grade stainless steel corrugated pipe heat exchangers. The Standard version has 3 heat exchangers, inside the energy tank there are no screw connections, adapters etc.

The standard sizes begin at 1,100 Liter up to 4,500 Liter / 340 USG – 1,200 USG

The big sizes start at 7,700 Liter to 40,000 Liter / 2,030 USG up to 10,630 USG

Bigger individual sizes are also possible.

The insulation starts at 10 cm /4 Inch with the smaller ones up to 20 cm / 8 Inch for the bigger sized tanks.



Cleveland – November 2017